

Moving the V5 K64 Database.

Before moving database:

Install the V5 K64 software on the new computer.

Open the software on the new computer and make sure the software version is the same as the old computer or higher. The version can be found at the bottom of the login screen.

Log into the software on the new computer.

User name- ADMIN

Password- PTI

Must be logged into both computers as the ADMIN

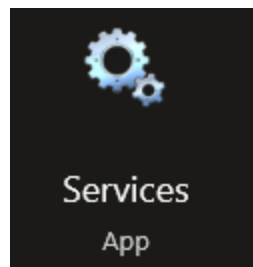
Must shut down SQL Express Services on both computers

Start with the original/ 1st/ old computer

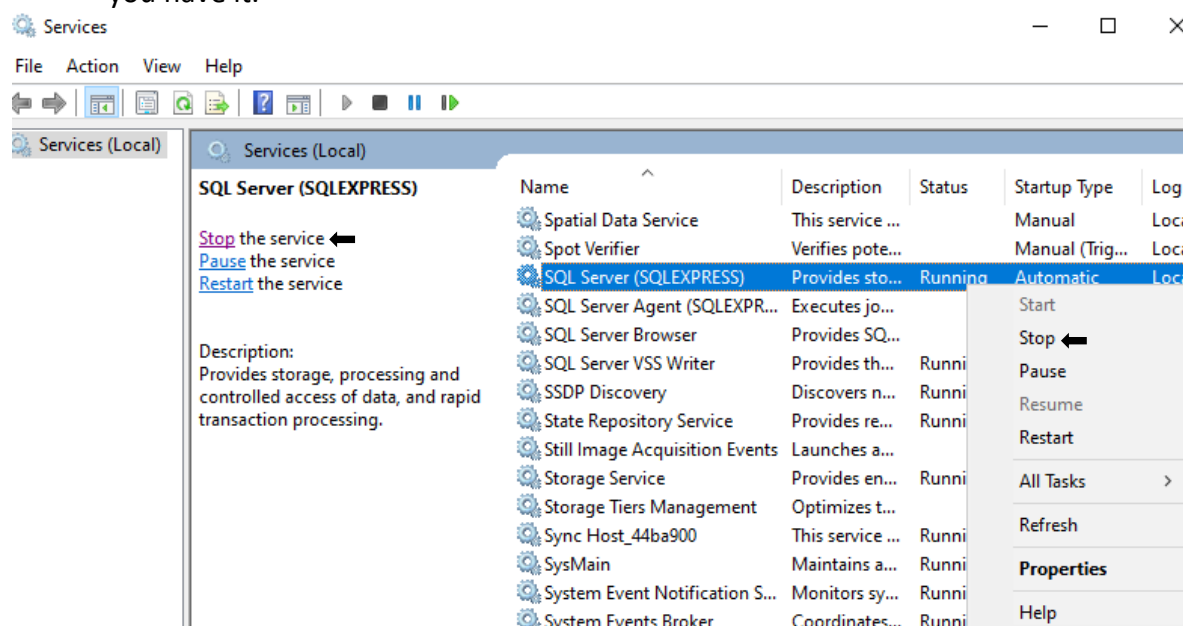
HOW TO TAKE THE DATABASE FILES

To shut down SQL Server (SQLEXPRESS)

1. Search your computer for services and open

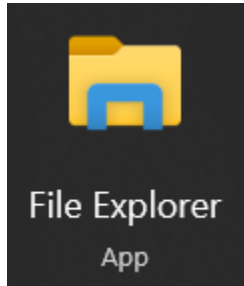


2. Find SQL Server (SQLEXPRESS) right click and choose to STOP or STOP on the left if you have it.



Coping the database files

1. Search your computer for File Explorer and open or click the icon at the bottom of your screen



2. On the left under This PC, open the C drive. The c drive will have (C:) next to it.
3. Choose Program Files then MicrosoftSQLServer.
4. Click on MSSQL11.SQLEXPRESS, then MSSQL. Click DATA next.
C:\ProgramFiles\MicrosoftSQLServer\MSSQL11.SQLEXPRESS\MSSQL\DATA
5. Copy the **SyncDB.mdf**, **SyncDB_log.ldf**, **TimeTraxV5.mdf** and the **TimeTraxV5_log.ldf**. Save them to a folder on a flash drive or a folder on your Shared Drive.

This PC > Windows (C:) > Program Files > Microsoft SQL Server > MSSQL11.SQLEXPRESS > MSSQL > DATA ←				
Name	Date modified	Type	Size	
master.mdf	04/27/2022 10:13 AM	SQL Server Databa...	4,096 KB	
mastlog.ldf	04/29/2022 10:23 AM	SQL Server Databa...	768 KB	
model.mdf	04/27/2022 10:14 AM	SQL Server Databa...	2,112 KB	
modellog.ldf	04/29/2022 10:23 AM	SQL Server Databa...	512 KB	
MSDBData.mdf	04/27/2022 10:14 AM	SQL Server Databa...	14,080 KB	
MSDBLog.ldf	04/29/2022 10:23 AM	SQL Server Databa...	768 KB	
SyncDB.mdf ←	04/29/2022 10:44 AM	SQL Server Databa...	17,472 KB	
SyncDB_log.ldf ←	04/29/2022 10:44 AM	SQL Server Databa...	10,368 KB	
tempdb.mdf	04/29/2022 10:23 AM	SQL Server Databa...	3,136 KB	
templog.ldf	04/29/2022 10:23 AM	SQL Server Databa...	768 KB	
TimeTraxV5.mdf ←	04/29/2022 10:51 AM	SQL Server Databa...	478,976 KB	
TimeTraxV5_log.ldf ←	04/29/2022 10:51 AM	SQL Server Databa...	297,024 KB	

HOW TO PUT THE DATABASE FILES IN

To shut down SQL Server (SQLEXPRESS)

1. Launch the software to the login screen. You do not need to login. Close software.
2. Be sure the software is close.
3. Search your computer for services and open
4. Find SQL Server (SQLEXPRESS) right click and choose to STOP or STOP on the left if you have it.

Pasting the database files.

5. Copy the 4 files that you saved. You will need to copy the files from the flash drive or from the desktop. * If you used a shared drive to move the database files you will need to copy them to the desktop before they can be copied into the database location. Once on the desktop copy the files.
6. Search your computer for File Explorer and open.
7. On the left under This PC, open the C drive. The c drive will have (C:) next to it.
8. Choose Program Files then MicrosoftSQLServer.
9. Click on MSSQL11.SQLEXPRESS, then MSSQL. Click DATA next.
C:\ProgramFiles\MicrosoftSQLServer\MSSQL11.SQLEXPRESS\MSSQL\DATA

Confirm that there are files there before continuing!

SyncDB.mdf, SyncDB_log.ldf,
TimeTraxV5.mdf, TimeTraxV5_log.ldf.

If you don't see them check that the software has been installed and you have launched it from the desktop icon. If you have to open the software at this point you will need to stop the services again.

10. Paste the 4 files into the data folder. You can replace the existing.

When this is complete, start the SQL Server (SQLEXPRESS). Reopen the software on the new computer. Normal login should work at this time.